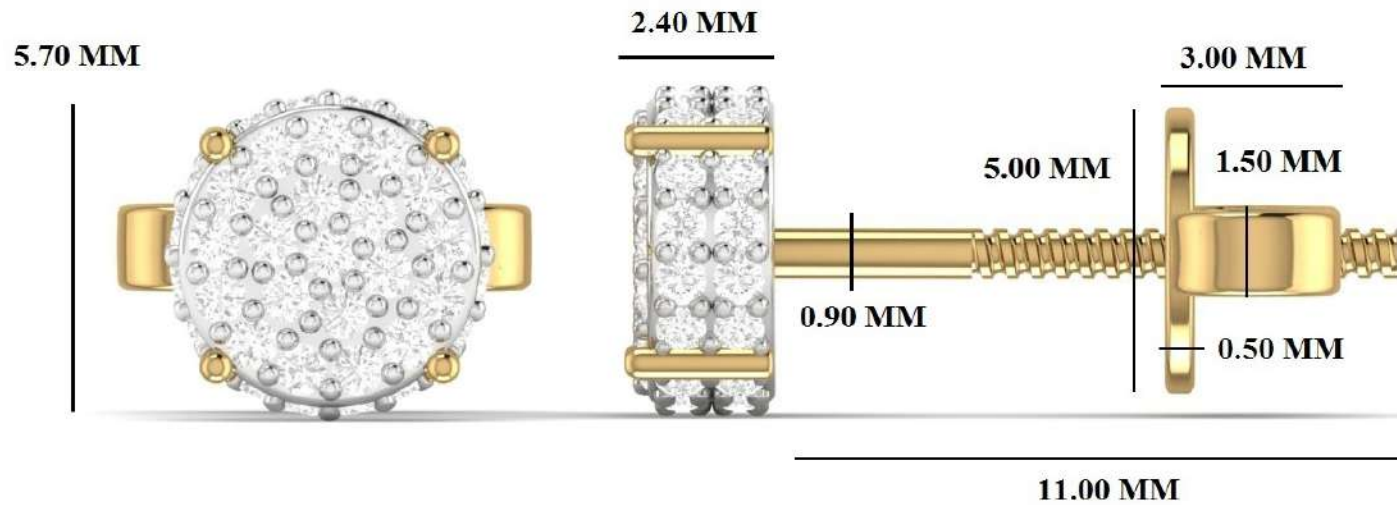


PO.CDL-2547

BOZ-ER015



18KT Yellow GWT : 1.77 GM

MM	SIEVE	DIA W	PCS	WT
0.90	+.000	0.004	104	0.416
	Total		104	0.416

PO.CDL-11084

PJ-ER001



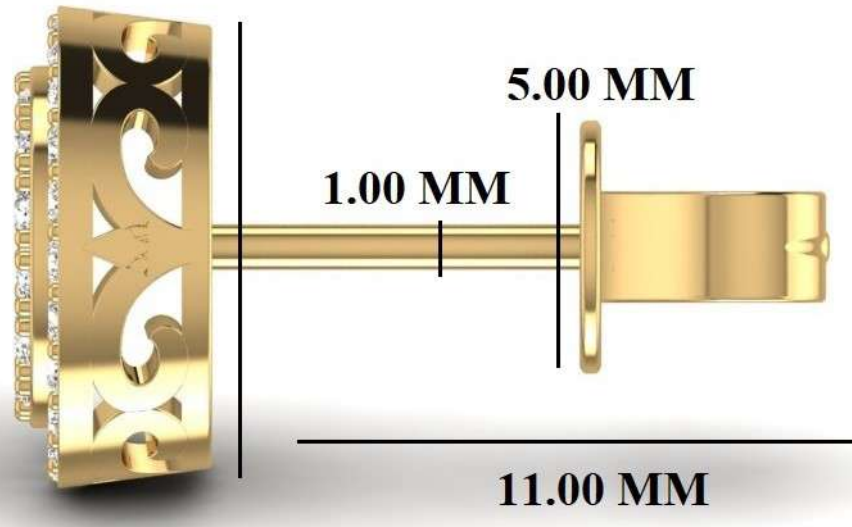
**Yellow
gold weight
(18 kt) 1.80 gm/**

SIEVE SIZE	DIA WT/PC	DIA MM	DIA PCS	DIA WT
0-00	0.005	1.00	48	0.24
8-8.5	0.038	2.10	2	0.08
		Total	50	0.32

9.44 MM



8.63 MM



3.80 MM

1.00 MM

5.00 MM

11.00 MM

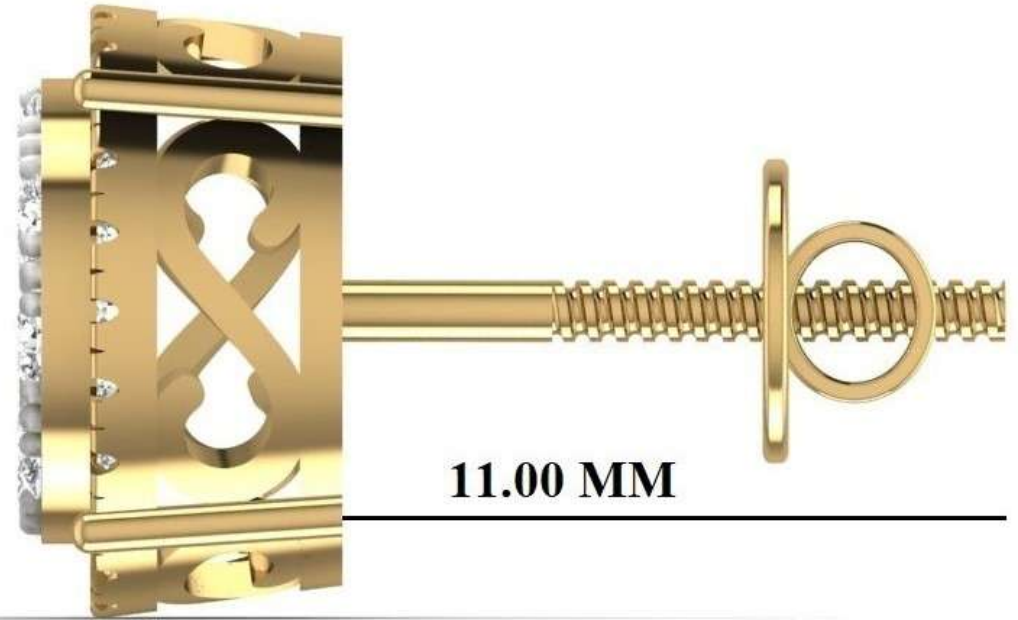
10KT Yellow GWT : 2.40 GM

MM	SIEVE	DIA W	PCS	WT
1.00	.+00	0.005	14	0.07
1.05	.+00	0.0055	46	0.253
1.30	.+2.5	0.010	14	0.14
1.40	.+3.5	0.013	14	0.182
2.10	.+8	0.039	2	0.078
	Total		90	0.723

10.00 MM



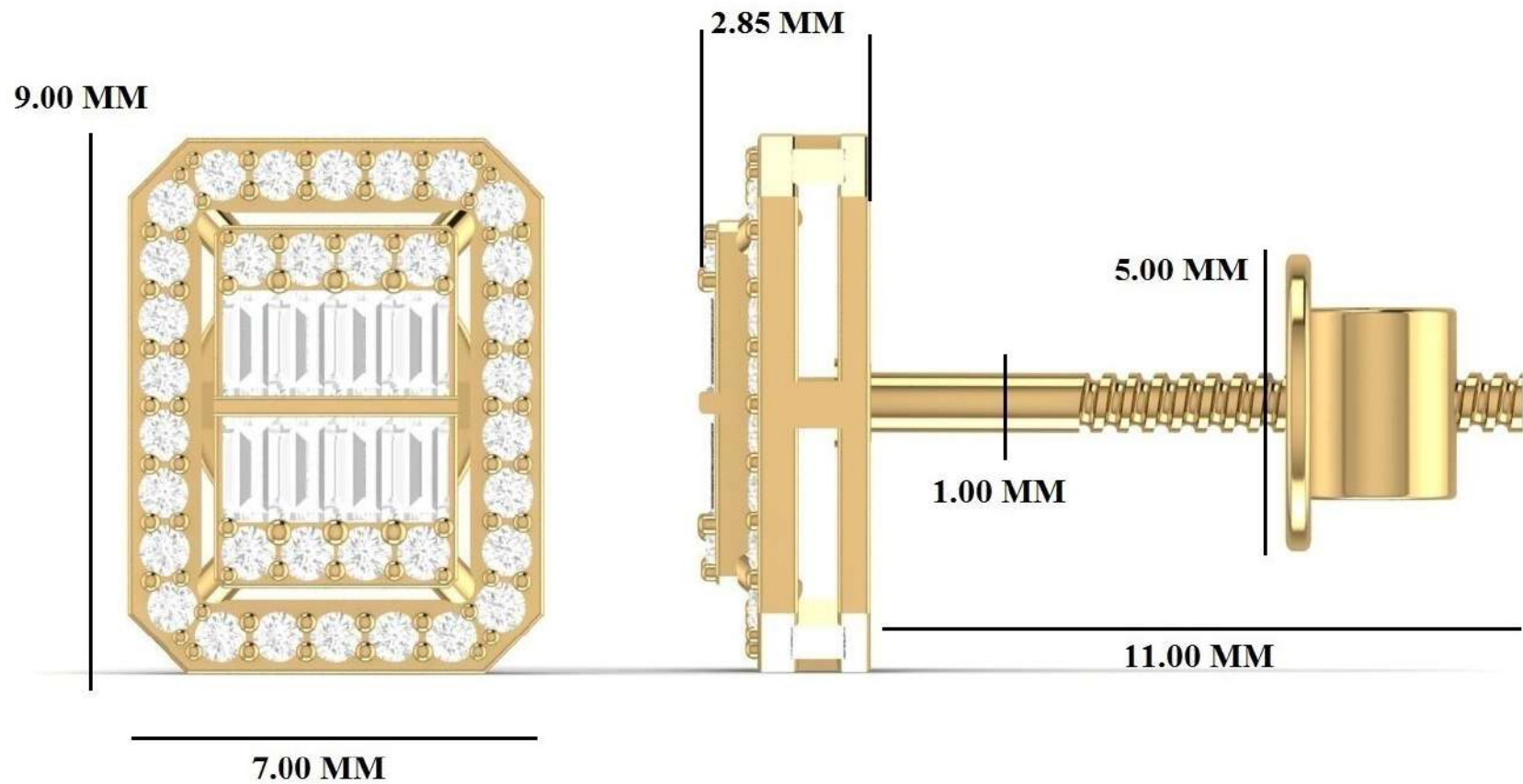
5.30 MM



11.00 MM

10 KT Yellow GWT : 2.61 GM

MM	SIEVE	DIA W	PCS	WT
1.05	+.00	0.0055	48	0.264
1.15	+.1	0.0067	6	0.0402
1.70	+.6	0.021	6	0.126
1.85	+.6.5	0.0275	18	0.495
	Total		78	0.9252



18KT Yellow GWT : 2.19 GM

Round Dia :

MM	SIEVE	DIA W	PCS	WT
0.85	+.0000	0.003	52	0.156
0.90	+.000	0.004	16	0.064
	Total		68	0.22

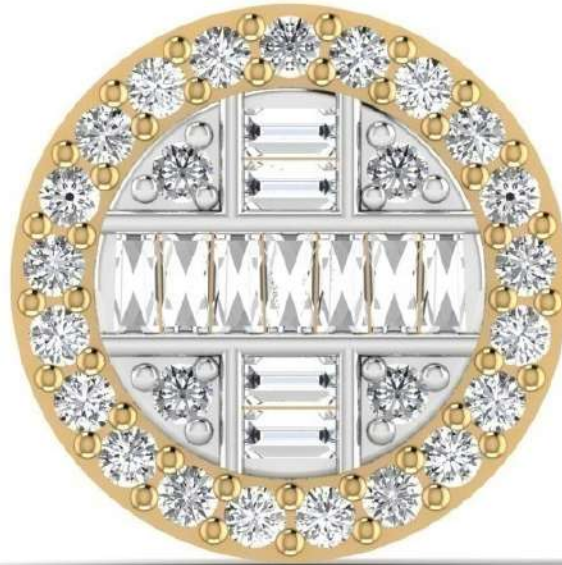
Baguette Dia : 1.80 X .95 MM * 16 PCS
WT : 0.21 CTS



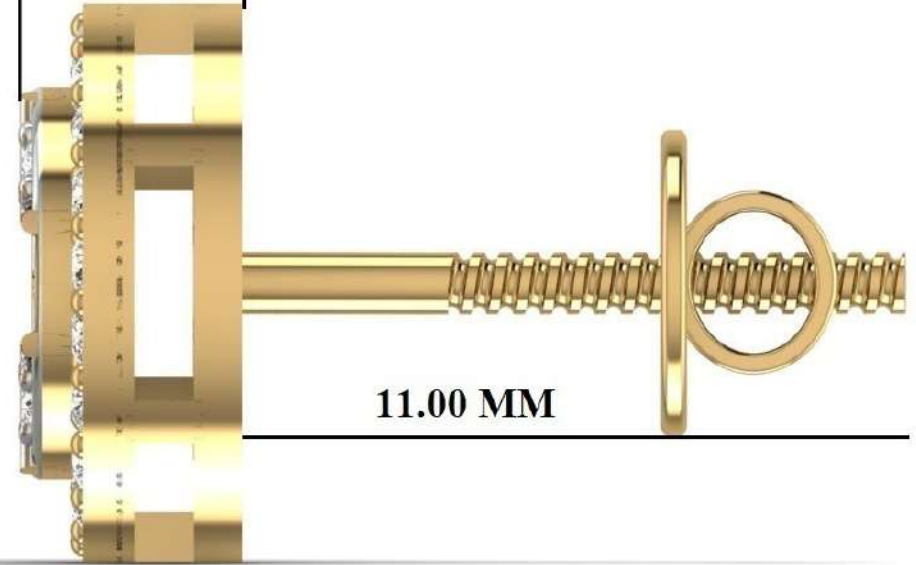
Yellow
18 kt -2.50 gm

SIEVE SIZE	DIA WT/PC	DIA MM	DIA PCS	DIA WT
14-14.5	0.144	3.30	2	0.29
		Total	2	0.29

9.10 MM



3.60 MM



11.00 MM

RC-ER1129(MODIFY-1)

10 KT Yellow GWT : 2.07 GM

Single cut —

Round	SIEVE	DIA W	PCS	WT
1.00	.+00	0.0042	50	0.21
Total			50	0.21

Baguette Dia	DIA W	PCS	WT	
1.70 X 0.85	0.009	8	0.072	
Total			8	0.072

T Baguette Dia	DIA W	PCS	WT	
1.80 X 0.85 & 0.75	0.01	14	0.14	
Total			14	0.14



RC-ER1135

10 KT Yellow GWT : 1.71 GM

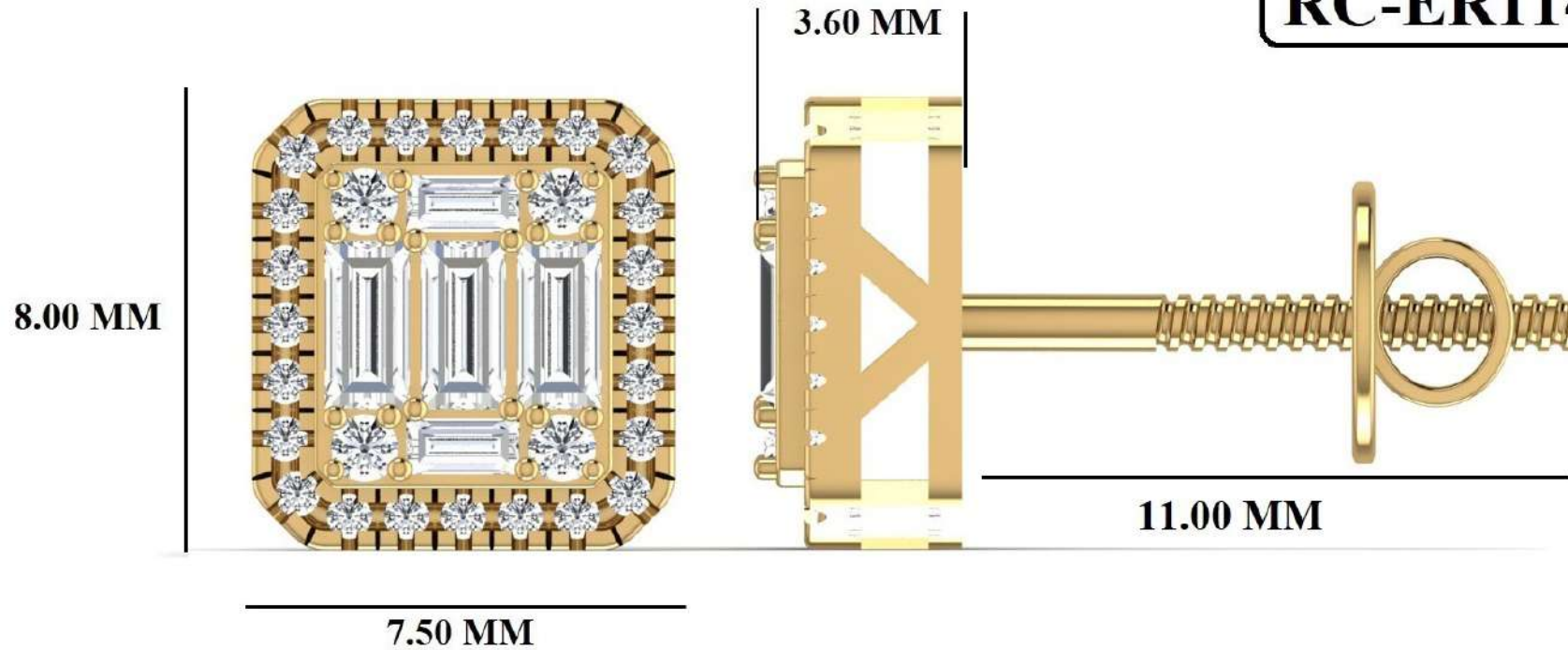
	Round	SIEVE	DIA W	PCS	WT
Single cut	0.70	.-0000	0.0017	56	0.0952
	0.75	.-0000	0.0017	16	0.0272
	1.10	.+0	0.0067	8	0.0536
Full cut	1.55	.+5	0.016	8	0.128
	1.85	.+6.5	0.0275	10	0.275
		Total		98	0.579

Engraving : Metal Stamp

Priority

PO.CDL-16450

RC-ER1147



RC-ER1147

10 KT Yellow GWT : 1.70 GM

Mossanite				
Round	SIEVE	DIA W	PCS	WT
0.80	+.0000	0.00277	48	0.133
1.20	+.1.5	0.0076	8	0.0608
Total			56	0.19376

Baguette Dia	DIA W	PCS	WT
2.00 X 1.00	0.0175	4	0.07
3.00 X 1.50	0.0525	6	0.315
Total		10	0.385

Engraving : Metal Stamp

Priority

PO.CDL-16478

RC-ER1151



RC-ER1151

10 KT Yellow GWT : 1.63 GM

Mossanite				
Round I	SIEVE	DIA W	PCS	WT
1.10	.+0	0.005	12	0.06
1.20	.+1.5	0.0076	16	0.1216
4.00		0.24	2	0.48
	Total		30	0.6616

Engraving : Metal Stamp

Priority

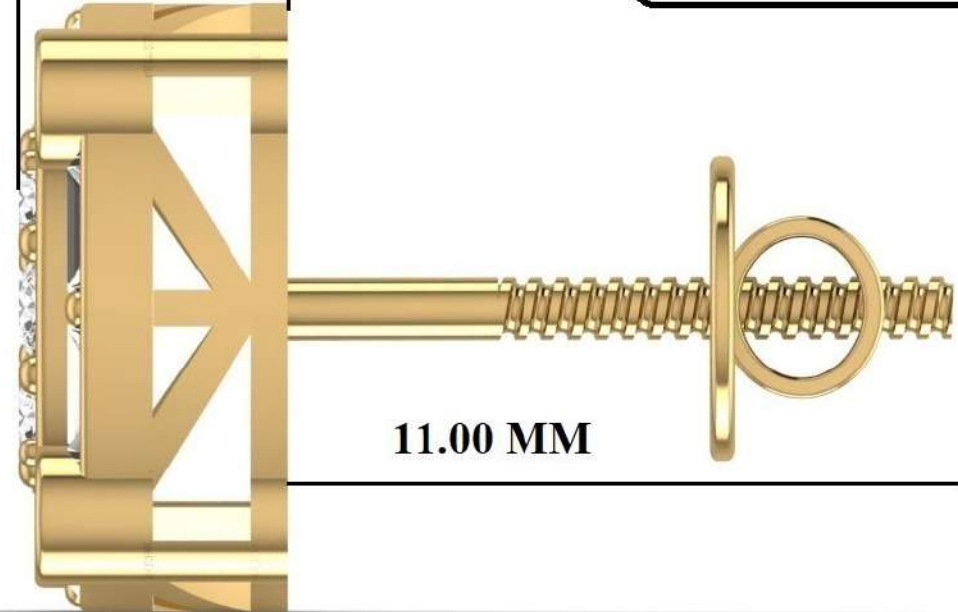
PO.CDL-16560

RC-ER1158

10.00 MM



4.40 MM



11.00 MM

RC-ER1158

10 KT Yellow GWT : 2.50 GM

Full cut

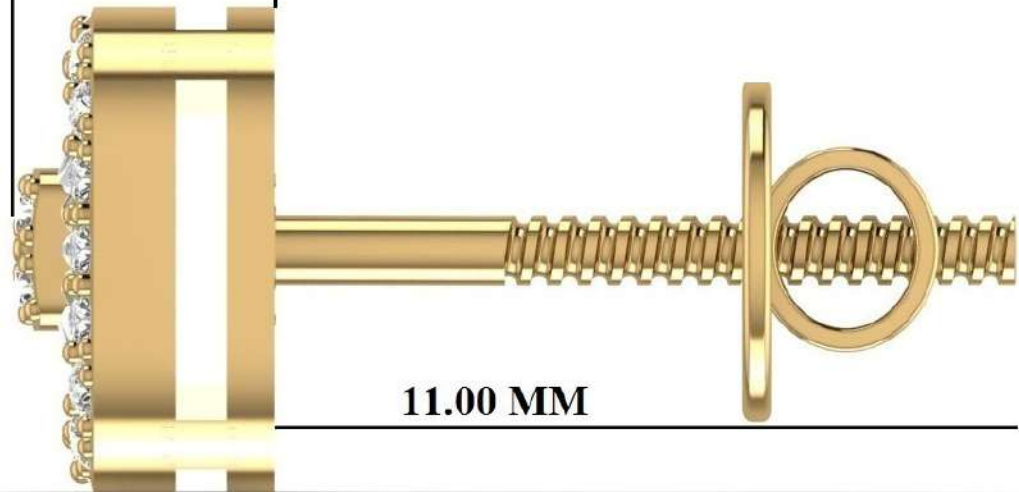
Round I	SIEVE	DIA W	PCS	WT
1.70	.+6	0.021	16	0.336
1.75	.+6	0.0225	8	0.18
	Total		24	0.516

Baguette Dia	DIA W	PCS	WT
2.40 X 1.10	0.05	16	0.8
2.50 X 1.10	0.055	4	0.22
	Total	20	1.02

6.85 MM



3.80 MM



11.00 MM

10 KT Yellow GWT : 1.38 GM

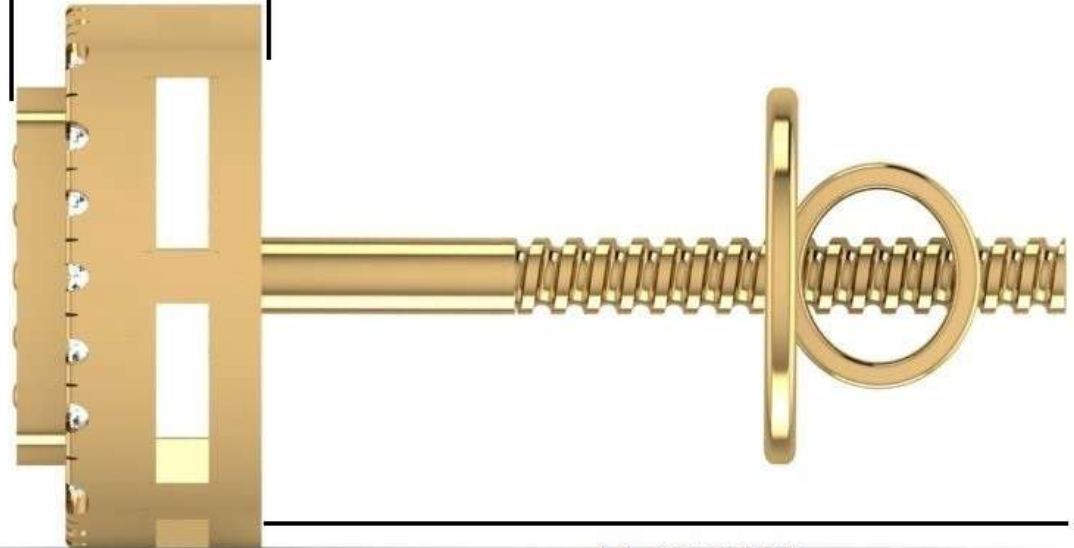
Round [v]	SIEVE [v]	DIA W [v]	PCS [v]	WT [v]
0.80	.+0000	0.002	44	0.088
0.90	.+000	0.004	8	0.032
	Total		52	0.12

T.Baguette Dia [v]	DIA W [v]	PCS [v]	WT [v]
1.50 X 0.80 & 0.50	0.008	8	0.064
1.70 X 1.00 & 0.50	0.009	24	0.216
	Total	32	0.28

7.20 MM



3.25 MM



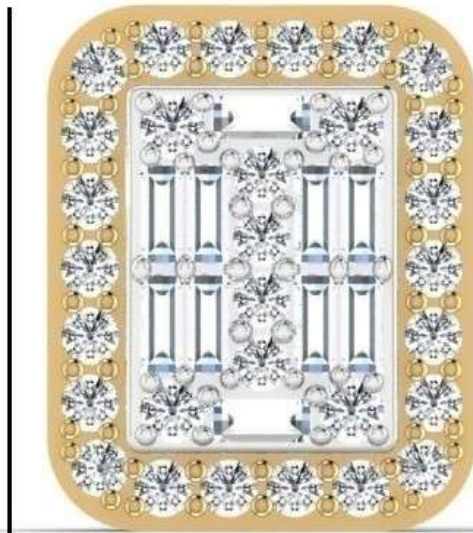
11.00 MM

10KT Yellow GWT : 1.48 GM

Baguette Dia	DIA W	PCS	WT
1.30 X 0.60	0.007	16	0.112
	Total	16	0.112

Round	SIEVE	DIA W	PCS	WT
0.70	.-0000	0.0015	24	0.036
0.80	+.0000	0.002	32	0.064
1.30	+.2.5	0.010	2	0.02
	Total		58	0.12

7.30 MM



6.10 MM

4.00 MM



11.00 MM

10KT Yellow GWT : 1.56 GM

Round	SIEVE	DIA W	PCS	WT
0.60	.-0000	0.0015	8	0.012
0.80	+.0000	0.002	44	0.088
0.90	+.000	0.004	8	0.032
	Total		60	0.132

Baguette Dia	DIA W	PCS	WT
1.30 X 0.70	0.007	20	0.14
	Total	20	0.14



10KT Yellow GWT : 1.57 GM

Baguette Dia	DIA W	PCS	WT
1.70 X 0.85	0.009	12	0.108
	Total	12	0.108

Round	SIEVE	DIA W	PCS	WT
0.70	.-0000	0.0015	24	0.036
0.80	+.0000	0.002	48	0.096
	Total		72	0.132

2.90 MM



8.00 MM

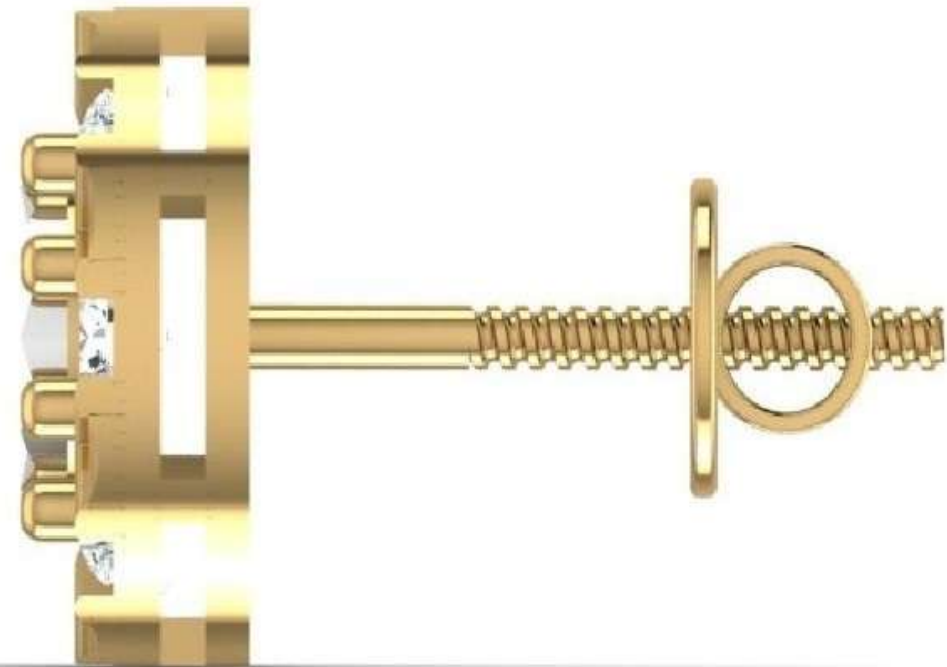
(1 Pair Detail)

18 KT Yellow GWT : 2.33 GM

Round Dia	SIEVE	DIA W	PCS	WT
0.90	+.000	0.00495	48	0.2376
1.50	+.4.5	0.0154	8	0.1232
	Total		56	0.3608

Baguette Dia	DIA W	PCS	WT
1.70 X 0.70	0.009	22	0.198
	Total	22	0.198

10.30 MM



3.35 MM

(1 Pair Detail)

10 KT Yellow GWT : 2.23GM

Round [v]	SIEVE v	DIA W' v	PCS [v]	WT [v]
2.40	+.9.5	0.058	18	1.044
	Total		18	1.044

11.10 MM



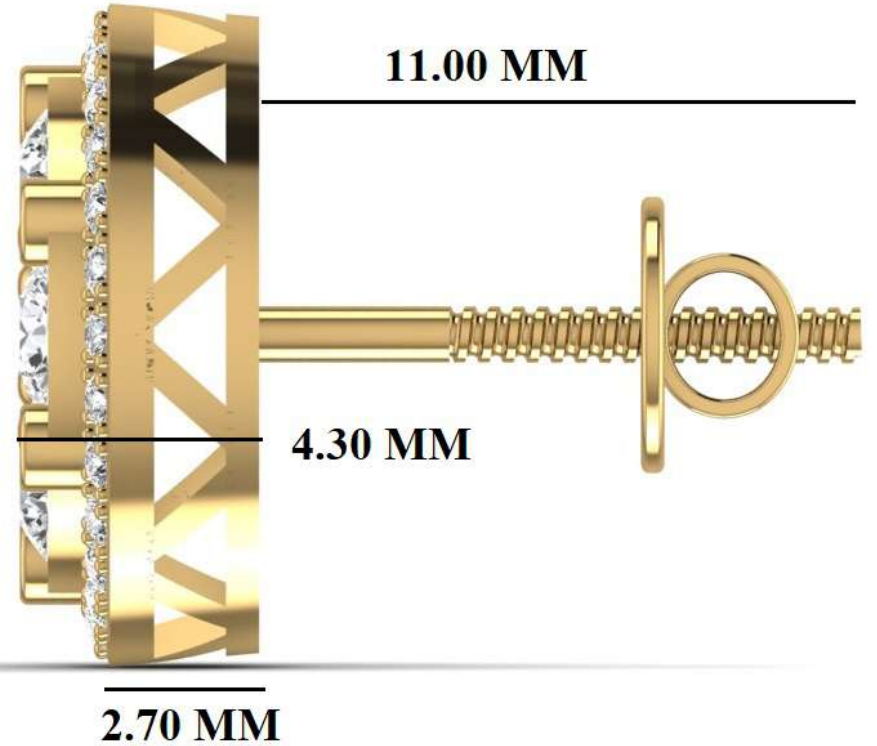
3.20 MM



18 KT Yellow GWT : 2.75 GM

Round Dia	SIEVE	DIA W	PCS	WT
1.50	.+4.5	0.0154	12	0.1848
1.60	.+5.5	0.0198	26	0.5148
	Total		38	0.6996

12.00 MM



RC-ER036

10 KT Yellow GWT : 2.78 GM

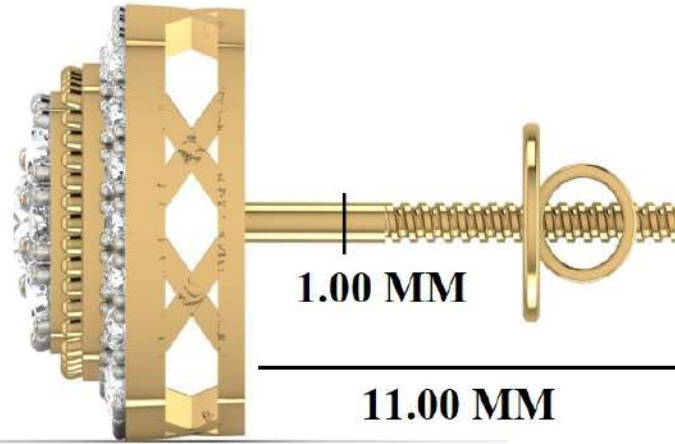
MM	SIEVE	DIA W	PCS	WT
1.00	.+00	0.005	68	0.34
2.90	.+12	0.09	14	1.26
	Total		82	1.6

\$ 249

11.00 MM



5.80 MM



RC-ER1089

10KT Yellow GWT : 3.54 GM

Round I	SIEVE	DIA W	PCS	WT
1.20	+.1.5	0.0087	48	0.4176
1.50	+.4.5	0.014	8	0.112
2.05	+.7.5	0.0375	8	0.3
2.95	+.12	0.09	2	0.18
	Total		66	1.0096